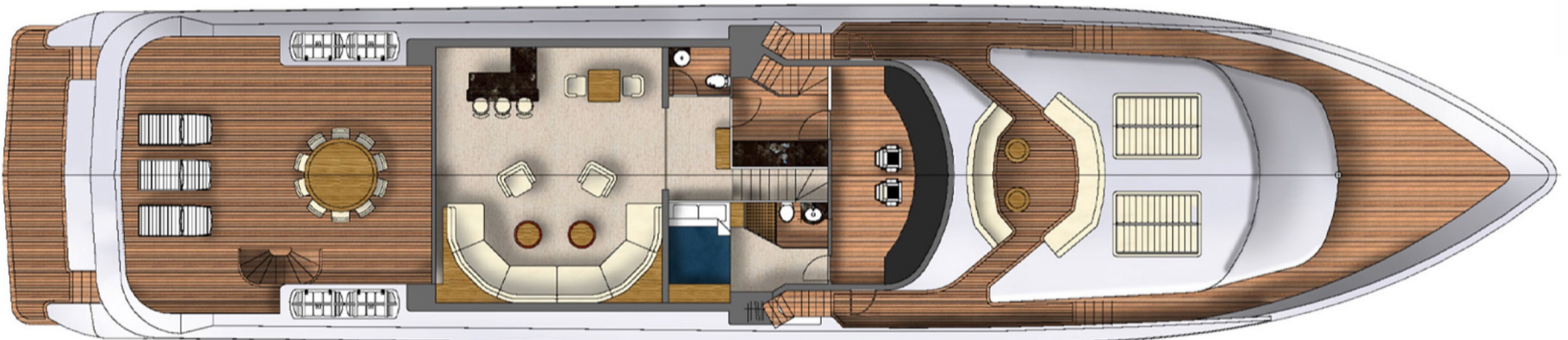
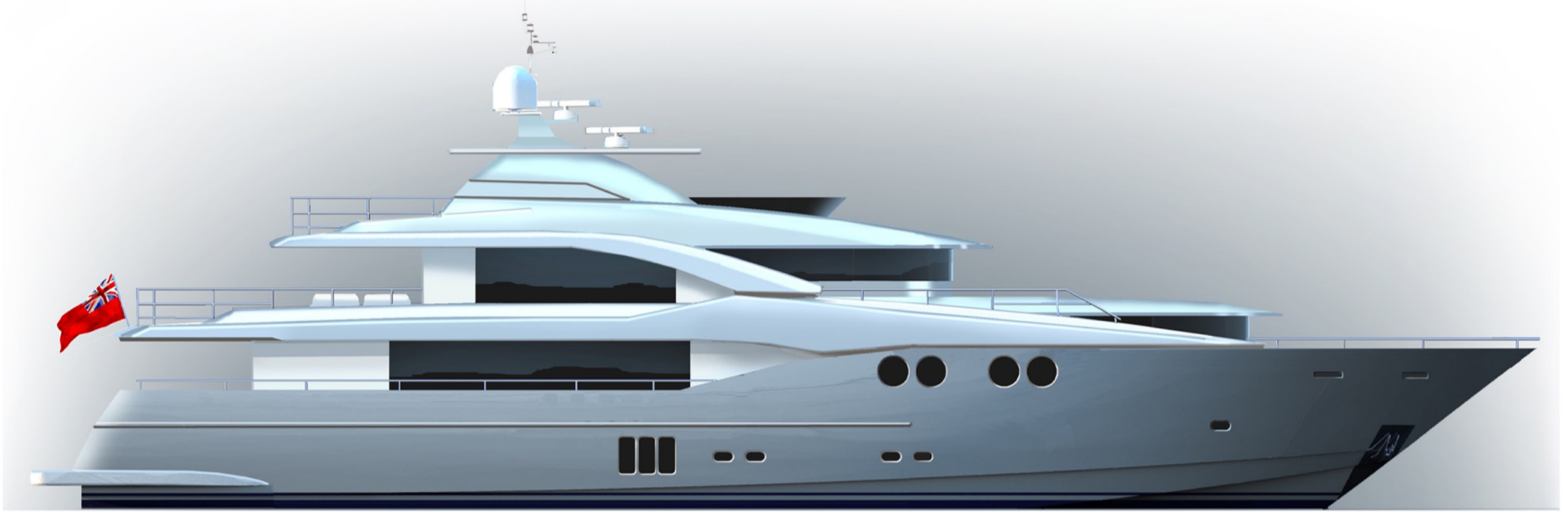


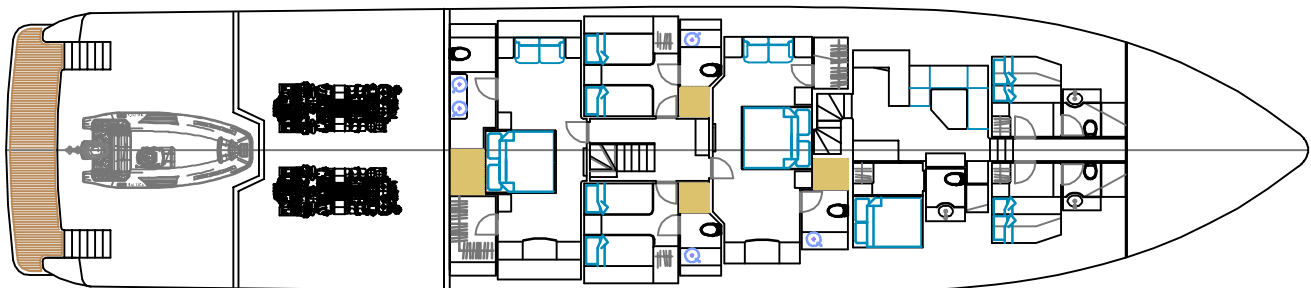
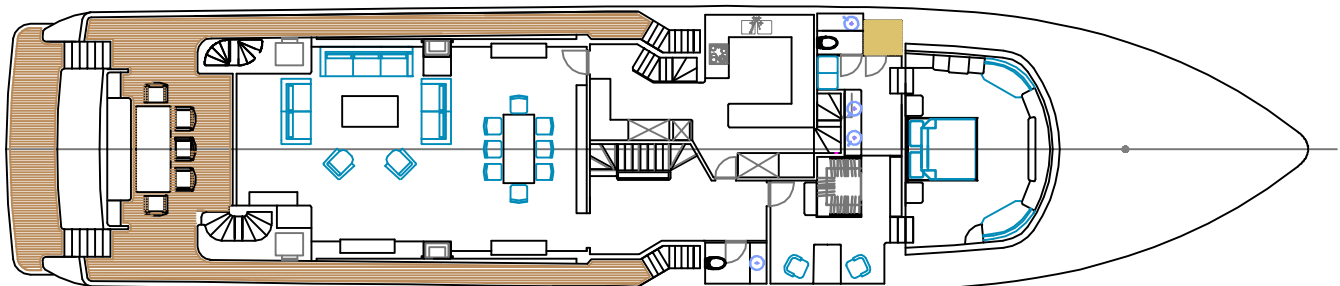
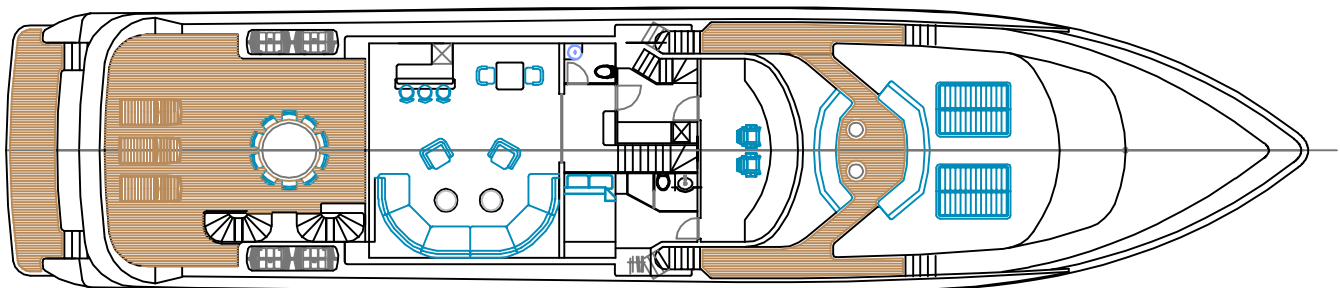
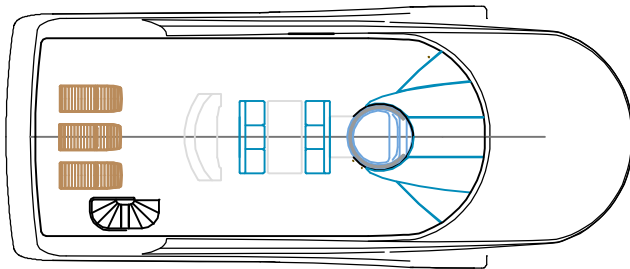
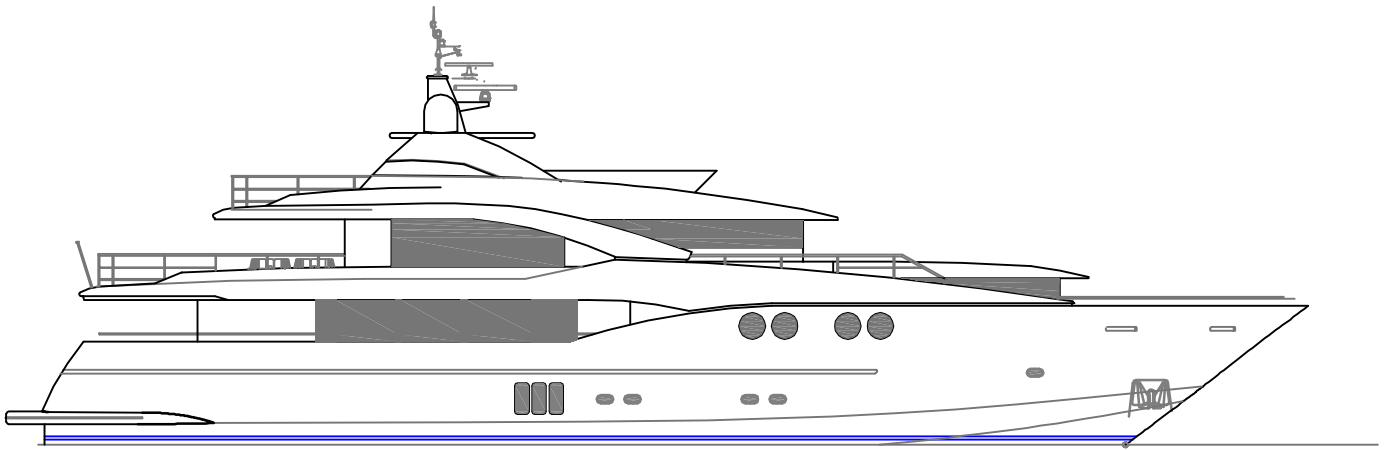
# Johnson 125



All intellectual property rights in the designs belong to Angus S. Primrose (trading as Dixon Yacht Design) and is confidential. It must not be used for manufacture or copied or communicated to any other person without the express permission of Dixon Yacht Design.

Principle Dimensions (preliminary)

LOA inc platform	38.00m (124.7ft)
LWL	31.38m (103.0ft)
BEAM	8.25m (27.1ft)
DRAFT	2.3m (7.5ft)
DISPLACEMENT HALF LOAD	180 tonnes



Issue	Date	Revised	By

DESIGN : JOHNSON 125  
 TITLE : OUTBOARD PROFILE & GA  
 DATE : 12-12-06  
 SCALE : 1:75M (A1)  
 DRG NO : S424-1  
 COMP REF : S424 PR

**dixon**  
yacht design

Dixon Design  
 4, Highgate Avenue  
 10, Highgate Road, Highgate  
 London, N10 0DA, UK  
 Tel: +44 (0)20 8850 1000  
 Fax: +44 (0)20 8850 1001  
 Email: info@dixon-design.com