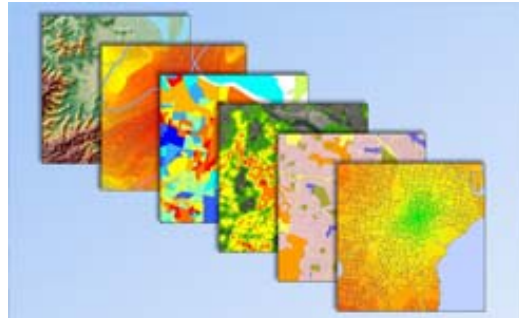




Surveying

We are a leading surveying company in Newcastle and the Hunter



GIS Services

Managing, integrating and analysing spatial data for better decision making



Engineering Design

Expertise in providing civil design services for a variety of projects



Planning & Environment

Providing holistic planning and environmental services and solutions



Project Management

Dedicated to managing land development and infrastructure works

Newcastle: PO Box 726 NEWCASTLE NSW 2300 / 125 Bull Street NEWCASTLE WEST NSW 2302 / Phone: (02) 4926 1388 / Fax: (02) 4929 3475
Gunnedah: PO Box 328 GUNNEDAH NSW 2380 / 88 Marquis Street GUNNEDAH NSW 2380 / Phone: (02) 6742 0166 / Fax: (02) 4929 3475
Sydney: PO Box 28 CROWS NEST NSW 1585 / Suite 405, 486 Pacific Highway ST LEONARDS NSW 2065 / Phone: (02) 9436 4210 / Fax: (02) 4929 3475

Email: survey@monteathpowys.com.au
Web: www.monteathpowys.com.au
ABN: 94 000 861 110

Bathymetric Surveys



Specialised Equipment

Monteath & Powys have a long history of providing bathymetric survey services to a range of clients and purposes.

Typical uses of bathymetric survey data are:-

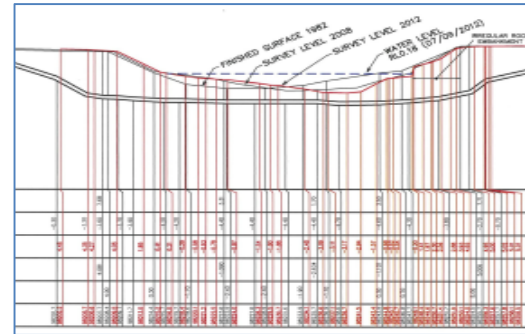
- Topographic data from civil designs.
- River bed erosion monitoring.
- 3D modelling.

Typical recipients of bathymetric survey data are:-

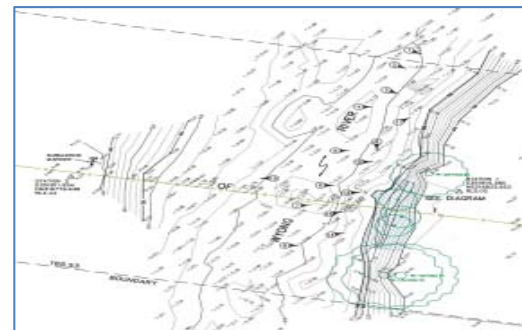
- Service Authorities.
- Civil Engineers.
- Geotechnical Engineers.
- Environmental Services.
- Planners.

Monteath & Powys are able to provide effective and competitive solutions for small and medium size bathymetric survey requirements in enclosed waters using survey accurate RTK GNSS and transponder equipment.

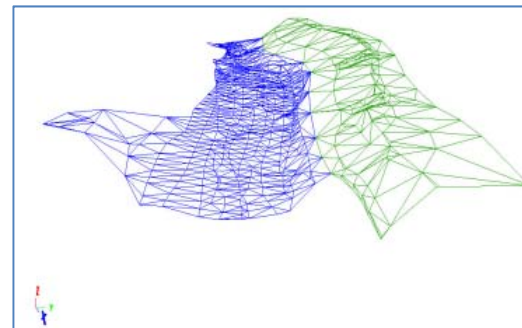
The combination of a Trimble R8 RTK GNSS unit and sonarmite transponder gives a typical accuracy of 0.1 metres.



Erosion Monitoring



Topographical Survey



River Bed Modelling

RECENT PROJECTS AND CLIENTS

- **Jemena** - Several bathymetric surveys of the Hawkesbury River to monitor bed erosion and depth of cover over the Sydney to Newcastle gas pipeline (800 metres wide).
- **Jemena** - Remediation of the bank of the Wyong River over the Sydney to Newcastle gas pipeline.
- **BHP Billiton** - Bathymetric survey of 1.3kms of the Hunter River for dredge planning purposes.