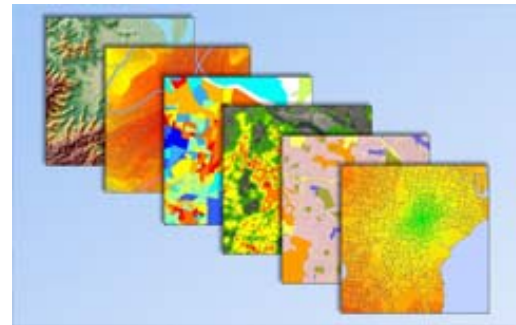




**Surveying**

We are a leading surveying company in Newcastle and the Hunter



**GIS Services**

Managing, integrating and analysing spatial data for better decision making



**Engineering Design**

Expertise in providing civil design services for a variety of projects



**Planning & Environment**

Providing holistic planning and environmental services and solutions



**Project Management**

Dedicated to managing land development and infrastructure works

<b>Newcastle:</b>	PO Box 726 NEWCASTLE NSW 2300		125 Bull Street NEWCASTLE WEST NSW 2302		Phone: (02) 4926 1388		Fax: (02) 4929 3475
<b>Gunnedah:</b>	PO Box 328 GUNNEDAH NSW 2380		88 Marquis Street GUNNEDAH NSW 2380		Phone: (02) 6742 0166		Fax: (02) 4929 3475
<b>Sydney:</b>	PO Box 28 CROWS NEST NSW 1585		Suite 405, 486 Pacific Highway ST LEONARDS NSW 2065		Phone: (02) 9436 4210		Fax: (02) 4929 3475

**Email:** [survey@monteathpowys.com.au](mailto:survey@monteathpowys.com.au)  
**Web:** [www.monteathpowys.com.au](http://www.monteathpowys.com.au)  
**ABN:** 94 000 861 110

## CIVIL DESIGN

Monteath & Powys has a proven track record of experience and expertise in providing technical backup and resources to provide exacting civil design services for a variety of different projects, especially land development projects ranging in size from two lot subdivisions through to complex multi-staged estates consisting of several thousand lots. This experience includes subdivision lot layouts, road design, stormwater drainage design, and design management of major estate works.

Monteath & Powys have forged strong relationships and partnerships with approval authorities, private companies and professional associations to maximise the effectiveness of our services.

## SERVICES

- Road and drainage designs for residential housing estates.
- Intersection designs within classified roads.
- Public roads, lanes, shared accesses, private roads.
- Two lot subdivisions through complex to multi-staged estates consisting of several thousand lots.
- Classified road upgrades.
- Haul roads.
- Design management of sub-consultants for estate major works including waste water pump stations, rising mains, trunk water mains, intersections etc.

## PROJECTS

- Cliftleigh residential subdivision
- Mornington Heights Estate, Gunnedah
- Coal & Allied land, Minmi
- Pacific Dunes Residential Community & Golf Course
- Salamander Waters
- Cameron Park Drive industrial land
- Nikkinba Ridge Estate, Fletcher
- Gallen Estate, Gunnedah

## WATER AND SEWER DESIGN

Monteath & Powys has proven experience and expertise in providing water and sewer designs and technical data for various projects, particularly land development projects of varying sizes.

Our water and sewer designers are accredited under the WSAA Code and have experience in producing designs that meet statutory water authority standards.

As well as providing project specific design services, we ensure that projects are completed in a timely way to minimise costs and comply with all the relevant standards. Above all, we ensure your development has the right approvals for power, water, sewerage and communication services.

## SERVICES

- Statutory water authority approvals.
- Minor works contracts – sewer and water designs.
- Major works contracts – sewer and water designs.
- WSAA Accredited through Hunter Water Corporation.
- Two lot subdivisions through complex to multi-staged estates consisting of several thousand lots.

## CLIENTS

- Winten property Group
- Pacific National
- UrbanGrowth NSW
- Roads and Maritime Services
- Newcastle Port Corporation
- Hunter Development Corporation
- RCL Group
- Daracon Group

