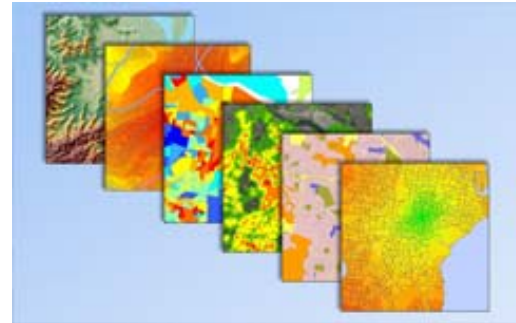




**Surveying**

We are a leading surveying company in Newcastle and the Hunter



**GIS Services**

Managing, integrating and analysing spatial data for better decision making



**Engineering Design**

Expertise in providing civil design services for a variety of projects



**Planning & Environment**

Providing holistic planning and environmental services and solutions



**Project Management**

Dedicated to managing land development and infrastructure works

<b>Newcastle:</b>	PO Box 726 NEWCASTLE NSW 2300		125 Bull Street NEWCASTLE WEST NSW 2302		Phone: (02) 4926 1388		Fax: (02) 4929 3475
<b>Gunnedah:</b>	PO Box 328 GUNNEDAH NSW 2380		88 Marquis Street GUNNEDAH NSW 2380		Phone: (02) 6742 0166		Fax: (02) 4929 3475
<b>Sydney:</b>	PO Box 28 CROWS NEST NSW 1585		Suite 405, 486 Pacific Highway ST LEONARDS NSW 2065		Phone: (02) 9436 4210		Fax: (02) 4929 3475

**Email:** [survey@monteathpowys.com.au](mailto:survey@monteathpowys.com.au)  
**Web:** [www.monteathpowys.com.au](http://www.monteathpowys.com.au)  
**ABN:** 94 000 861 110

# Mining and Infrastructure

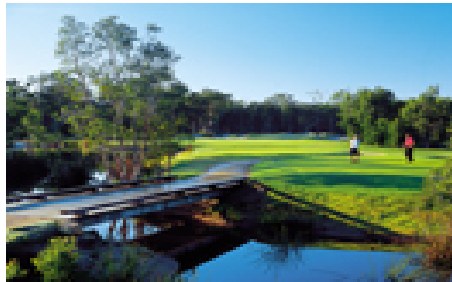


Monteath & Powys has full time experienced Project Managers who are totally dedicated to the management of land development and infrastructure projects. Our Project Managers are part of a professional team of over 60 experienced professionals across various inter-related disciplines.

Under the direction of Greg Williams our Project Managers have a proven track record of effective collaboration with clients, contractors and approval authorities. We have proven liaison skills and in-depth knowledge of the development and construction process and ensure the best solutions are tailored to each and every project.

Our pragmatic approach to land development processes spans a variety of large scale, complex and long term projects including infrastructure projects and industrial estates.

- Commercial and retail developments.
- Industrial developments.
- Urban development and public domain.
- Residential and industrial subdivisions.
- Civil infrastructure.
- Environmental management.
- Golf courses and community developments.



## PROJECTS

- Cliftleigh Residential Estate.
- Fern Bay Residential Subdivision.
- Mornington Heights Estate, Gunnedah.
- Gallen Estate, Gunnedah.
- Kennedy Air Agriculture.
- Pacific Dunes Residential Community and Golf Course.
- Stanhope Rural Subdivision.

## CLIENTS

- Winten Property Group.
- UrbanGrowth NSW.
- RCL Group.
- Daracon Group.
- Pacific Dunes Residential Community and Golf Course.
- Xstrata Coal.
- Aspen Group.
- Yeramba Estates.
- Hunter Trade College.
- Port Stephens Golf and Country Club.
- Gallens Estate.
- Aston Resources.
- Idemitsu Australia Resources.

## MEMBERSHIPS

- Urban development Institute of Australia.
- Australian Institute of Project Managers.
- Institution of Surveyors.
- Institution of Engineers.
- Australian Institute of Building.