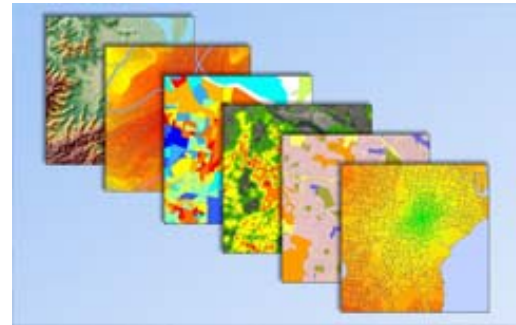




Surveying

We are a leading surveying company in Newcastle and the Hunter



GIS Services

Managing, integrating and analysing spatial data for better decision making



Engineering Design

Expertise in providing civil design services for a variety of projects



Planning & Environment

Providing holistic planning and environmental services and solutions



Project Management

Dedicated to managing land development and infrastructure works

Newcastle:	PO Box 726 NEWCASTLE NSW 2300		125 Bull Street NEWCASTLE WEST NSW 2302		Phone: (02) 4926 1388		Fax: (02) 4929 3475
Gunnedah:	PO Box 328 GUNNEDAH NSW 2380		88 Marquis Street GUNNEDAH NSW 2380		Phone: (02) 6742 0166		Fax: (02) 4929 3475
Sydney:	PO Box 28 CROWS NEST NSW 1585		Suite 405, 486 Pacific Highway ST LEONARDS NSW 2065		Phone: (02) 9436 4210		Fax: (02) 4929 3475

Email: survey@monteathpowys.com.au
Web: www.monteathpowys.com.au
ABN: 94 000 861 110



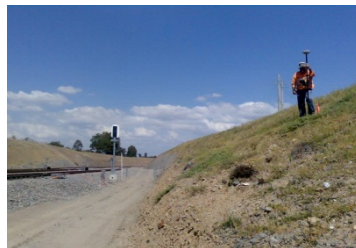
For over 60 years, our company has had a successful track record in providing outstanding achievements in land development and construction projects.

The tradition continues into the rail surveying field which has seen our experience applied in many new and innovative ways to deliver boundary, ground modelling and audit compliance expertise to the major rail network providers.

With over 60 staff members and up to 12 field crews, our modern office and computer network capabilities can supply a complete project service.

RECENT PROJECTS

- ARTC – Maitland to Minimbah 3rd track alliance.
- NCIG – 3rd coal loader project, berth construction survey, bathymetric surveys.
- PWCS Projects 3EXP – Kooragang terminal expansion.
- Ulan Line Upgrade – 18kms of ballast cleaning.
- Stabilisation of the bridge at East Maitland and track monitoring at Belford.
- Welded track stability analysis at Mayfield and Maitland. Innovation of data capture and reduction for formatting in ARTC WTS Excel spreadsheets.
- Bridge re-transoming over Wybon Creek, Glennies Creek and Goulburn River. Design of rail alignment, envelope clearances, transom packer sizing.
- Antienne to Grasree and St Heliers to Muswellbrook duplications and Muswellbrook loop yard re-modelling.
- Mount Thorley branch line work.



CLIENTS

- Australian Rail Track Corporation (ARTC)
- Newcastle Coal Infrastructure Group (NCIG)
- Port Waratah Coal Services (PWCS)
- BHP Billiton
- Newcastle Port Corporation (NPC)
- Roads and Maritime Services (RMS)
- Orica
- OneSteel
- Forgacs
- Engineering Consultants and Contractors

MEMBERSHIPS

- Institution of Surveyors (NSW)
- Australian Industry Group
- Hunter Business Chamber
- Surveying and Spatial Sciences Institute
- Hunternet